

**SPECIFICATIONS**

- Type A2 - 50 mm (2") veneer, strips with a 10 mm (.4") square opening
- Type B1 - 25 mm (1") veneer, strips open weave style
- Type B2 - 50 mm (2") veneer, strips open weave style
- Type C - 50 mm (2") veneer, strips, closed weave/checker board style
- Type E 19mm ( 3/4" ) cherry veneer open weave style
- Type F 28mm ( 1.125" ) bamboo
- Type G 37mm ( 1.5 " ) wenge
- Type H 37mm ( 1.5" ) bamboo
- Type J 28mm ( 1.125" ) walnut
- Type K 57mm ( 2.25" ) black apricot
- Type L 75mm ( 3" ) rosewood
- Type M 19mm ( 3/4" ) walnut
- Type N 8mm ( 3/8" ) light Zebrawood with 30mm ( 1.25" ) and 60mm ( 2 3/8" ) dark zebrawood
- Type P 8mm ( 3/8" ) Zebrawood with 30mm( 1.25" ) and 60 mm ( 2 3/8" ) walnut

**DIMENSIONS**

- 1220 x 2440 mm ( 48 x 96 " ) laminated to a 2mm ( 1/16" ) phenolic substrate



**OCTOWEAVE FABRICATION INSTRUCTIONS**

**CONDITIONING** - All OctoWeave sheets are to be properly conditioned to stabilize to the ambient conditions the panels will be installed in.

Ideal conditions are:

Temperature: 18 – 22 Celsius = 65 – 72 Fahrenheit  
Relative Humidity: 50 – 60 %

**SUBSTRATES** - OctoWeave sheets should be bonded to standard woodworking substrates such as particle board, MDF or HDF.

**FABRICATION** - OctoWeave sheets can be fabricated using the same tools used to process high pressure plastic laminate. Note that when cutting or sanding across the wood grain, special care should be taken. OctoWeave sheets can be curved. The minimum radius is directly related to the type of pattern on the sheet surface.

**GLUING** - Standard glues to bond high pressure plastic laminates.

**FINISHING** - Types A to C are stocked in a raw veneer form. Surface can be finished as any other wood veneer. Do not use water based finishes. Types E to P are stocked with a factory applied nitro cellulose finish. Test with a sample piece to ensure that any additional finishing is compatible with the factory finish.

CONTACT YOUR REPRESENTATIVE FOR MORE DETAILED FABRICATION INSTRUCTIONS.



OCTOPUS

**APPLICATIONS**

- CEILING ELEMENTS
- DOOR FACINGS
- ROOM DIVIDERS
- WALL PANELLING
- CHAIR BACKS
- EXHIBITS
- PARTITIONS
- FURNITURE COMPONENTS
- STORE DESIGN



[www.octopusproducts.com](http://www.octopusproducts.com)



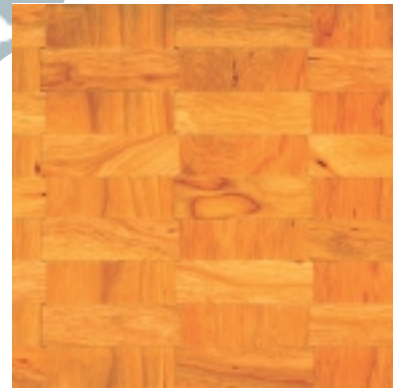
OCTOPUS

**OCTOPUS PRODUCTS LIMITED**  
23 Gurney Crescent, Toronto, Ontario M6B 1S9  
Tel: 416-531-5051 Toll Free: 1-877-OCTOLAM  
Fax: 416-531-3254  
e-mail: [sales@octopusproducts.com](mailto:sales@octopusproducts.com)

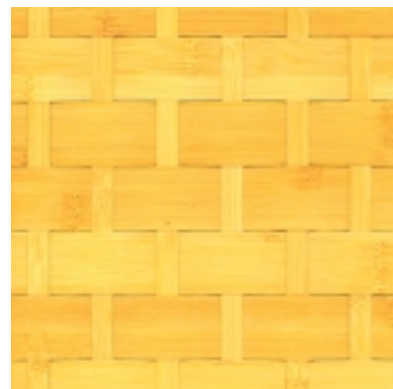
**OCTOPUS PRODUCTS USA INC.**  
3014 South Halladay, Unit D,  
Santa Ana, CA 92705  
Tel: 714 429 0233  
Fax: 714 979 4922  
e-mail: [info@octopusproducts.com](mailto:info@octopusproducts.com)

DECORATIVE VENEER WEAVES

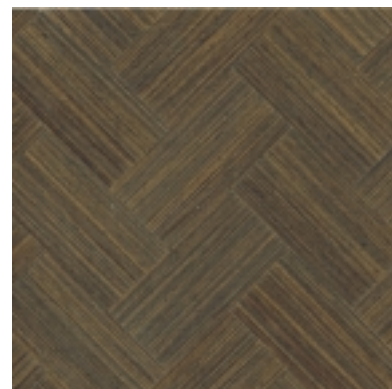
OCTOWEAVE WOVEN WOOD VENEER PANELS COMBINE THE ARTISTRY OF HANDMADE SHEETS AT COMPETITIVE PRICES.



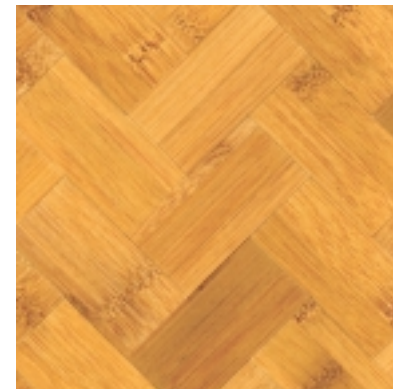
OWE - Cherry



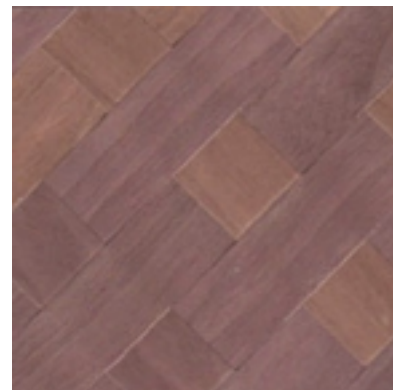
OWF - Light Bamboo



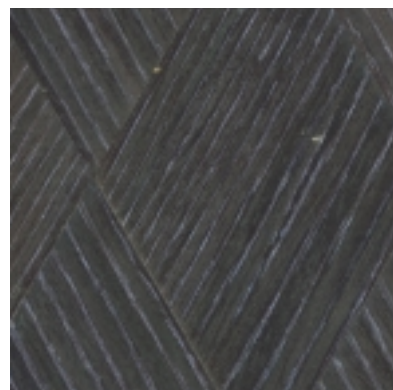
OWG - Wenge



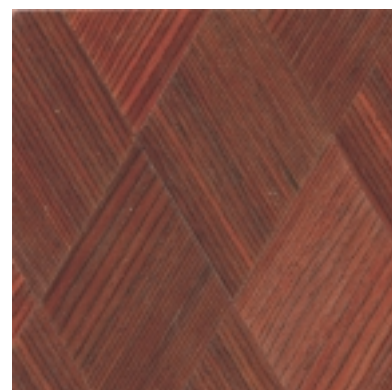
OWH - Bamboo



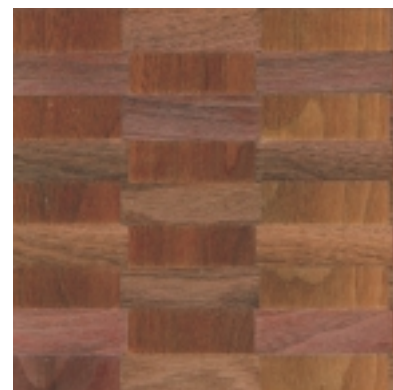
OWJ - Black Walnut



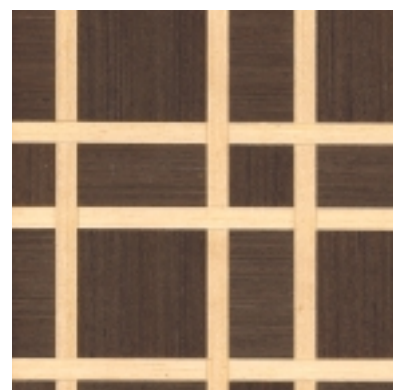
OWK - Black Apricot



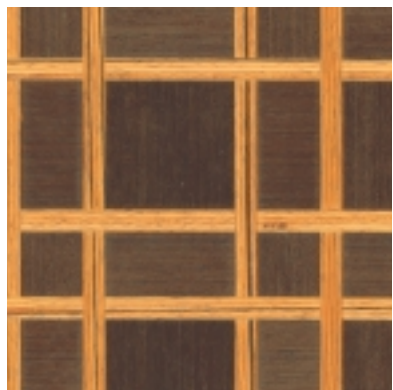
OWL - Rosewood



OWM - Black Walnut



OWN - Zebra/Zebra



OWP - Zebra/Walnut



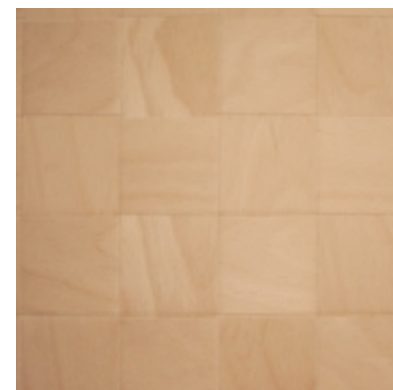
OWA2 Maple/Cherry



OWB1 Maple/Cherry



OWB2 Maple/Cherry



OWC Maple/Beech

OctoWeave woven wood veneer panels are bonded to a flexible phenolic substrate so sheets can be curved.

